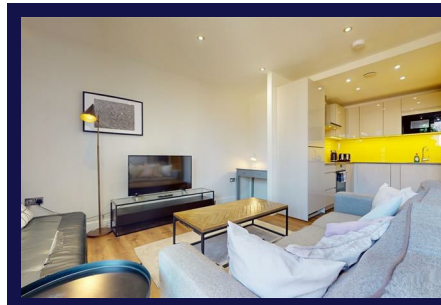
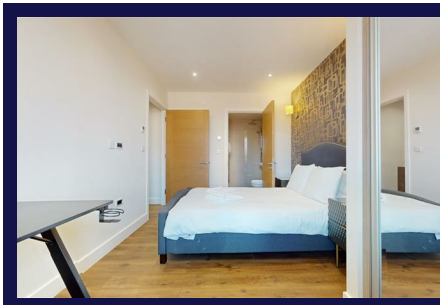


Back Church Lane, London, E1 1FL



Features:

- **Two Bedroom Apartment**
- **Luxury Design**
- **Fully Fitted Kitchen**
- **Balcony**
- **Passenger lift**
- **Wooden Floors**
- **Washing machine and Dryer**
- **Dishwasher**
- **Close to Transport links**

Description:

Foundation Estates are delighted to introduce a newly built property in fashionable Aldgate East quarter. This ad is for a 2 bedroom 2 bathroom, interior designed apartment with a balcony and we are looking for professional, corporate and diplomatic tenants as well as students willing to rent in this area.

This 2 double bedroom flat has 2 bathrooms. One room is ensuite

The apartment is furnished to the highest standard and has an open plan fully integrated kitchen. Luxury features include contemporary cooling and heating system, double-glazed windows, fitted wardrobes in the bedrooms and heated floors. Only the finest materials were used, making it a perfect place in which to luxuriate after a tiring day.

With Liverpool Street, Aldgate, Bank and Whitechapel Stations all a short distance away you will have easy access to 9 different lines of London Underground's network, plus the Stansted Express for those holiday getaways! It's just a short walk to the City yet close to the East End's trendy Shoreditch and Brick Lane areas.

All residents can also enjoy breath taking London views from the amazing roof garden which is made up of laid grass and colourful plants to give the garden a lovely feel and a restful place to sit and enjoy your leisure time. Additionally, the property has a built in secure cycle racks.

PRE - RECORDED VIDEO AVAILABLE FOR VIEWING ON REQUEST

£3,358 PCM